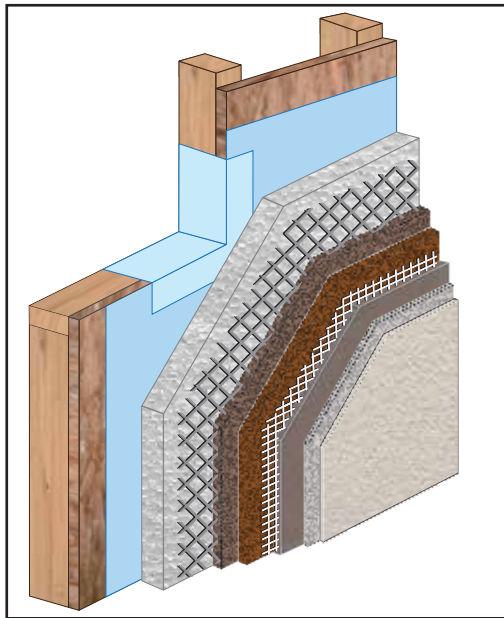




System Snapshot

Armourwall 300 Watermaster CI Stucco Systems

Standard & Krak-Shield Systems



Parex Armourwall 300 Watermaster CI Stucco incorporates continuous rigid insulation, helping designers meet today's code requirements and provides a durable exterior stucco façade with unique, refined aesthetic appeal. These 3/4" thick assemblies can be installed at greater thicknesses in accordance with ASTM C926 as required for fire resistance rated assemblies or STC ratings. Enhanced Krak-Shield crack-resistance is available for all configurations by incorporating a reinforced leveling coat prior to application of the finish. As a WaterMaster system it incorporates a liquid-applied air & water-resistive barrier membrane, used for both joint treatment and field surface area application, that significantly reduces air leakage, maximizes energy efficiency and eliminates the potential of rips and tears in the membrane during construction.

Suitable Types of Construction

Non-combustible
 Combustible
 Fire-Resistance Rated Walls
 Application Type
 Application Orientation

- Residential
- Residential
- Residential
- New
- Exterior Only

- Commercial
- Commercial
- Commercial
- Renovation

Substrates

Gypsum Sheathing
 Fiber Board
 Exposure 1 OSB¹

Cement Fiber Sheathing
 Concrete & CMU
 CDX Plywood²

¹Regional restrictions apply. For OSB applications outside of approved regions, use Parex Standard WaterMaster LCR.
²See Tech Bulletin TB008 and TB011.

Code Approvals

IBC Section 2512
 IRC Section R703.6.2

System Notes

- Stucco is a non-structural cladding. It depends on the substrate wall for support and attachment. Substrate construction must resist all design loads.
- Sheathing attachment to framing must resist design negative windloads; loads are transferred to the framing. Appropriate safety factors must be applied.
- All penetrations & non-draining terminations of the system must be made weather-tight.
- Armourwall 300 stucco systems can be installed with lath or direct applied over CMU. When direct applied over CMU, Parex WeatherDry is installed over the brown coat prior to application of the finish. See Parex USA Tech Bulletin TB029.

Components

System options vary based on assembly selected. Review Parex Stucco Systems for more detailed system information.

➤ **WRB, Joint Treatment & Flashing**

- Parex USA WeatherSeal Spray & Roll-On
- Parex USA 396 Sheathing Tape or 365 Flashing Membrane
- OR -
- Parex USA WeatherFlash Waterproof flashing

➤ **Termination Weep Strip**

- Three Dimensional Drainage Mat

Used in conjunction with WaterMaster systems

➤ **WRB, Field Substrate**

- Parex USA WeatherSeal Spray & Roll-On

Used with WaterMaster systems

The following WRB formulation options are available to meet specific project conditions and climate zone considerations:

- Class I – WeatherBlock
- Class III – WeatherDry, WeatherSeal Trowel-On
- Permeable - WeatherSeal Spray & Roll-On, WeatherSeal SB

➤ **Insulation Board**

- Extruded Polystyrene (XPS)
- Expanded Polystyrene (EPS)

- Maximum 2"
- Maximum 1.5"

➤ **Lath & Accessories**

- Minimum G60 Galvanized Steel
- OR -
- Rigid Polyvinyl Chloride (PVC)
- OR-
- Zinc Alloy

- Lath Locks: Wind-lock galvanized steel washer, 1 ¼" d, 24 gauge
- Metal Plaster Base: Minimum 17 gauge, self-furred, 2.5 lb/yd²
- Foundation Weep Screed, minimum 3 ½" vertical attachment flange

➤ **Scratch & Brown Coat**

- A Parex Fiber 47 Armourwall Stucco Base
- Sanded and Concentrate formulations are available.*

➤ **Stucco Admix (use with Scratch & Brown Coat materials)**

- Parex USA Adacryl Admix & Bonding Agent (optional)
- For enhanced adhesion, curing, freeze-thaw stability & workability.*

➤ **Krak-Shield, Enhanced Crack Resistance (Optional)**

- A Parex 121 Basecoat & Adhesive* or Parex USA Stucco Level Coat
- Reinforcing Mesh: 4.5 oz or 12 oz for stucco applications

** Select the formulation most suitable for the project*

➤ **Primer (Optional, use with acrylic & elastomeric finish materials)**

- A Parex USA primer suitable for finish selected

The use of primer enhances appearance and uniformity of the finish, improves finish coverage rates, helps prevent efflorescence, and promotes adhesion.

➤ **Finish or Coating**

- A Parex acrylic, elastomeric or specialty finish

NOTE: EPS Features & Shapes can be added as desired.

➤ **Sealers & Accent Stains (Optional)**

- A Parex USA sealer or accent stain to enhance aesthetics & cleanability.

Primarily used with specialty finishes

PAREXUSA

Parex USA, Inc.
4125 E. La Palma Ave., Suite 250
Anaheim, CA 92807
www.parexusa.com

866-516-0061 Tech Support: 800-226-2424

CI SOLUTIONS • STUCCO SYSTEMS • TILE AND STONE SYSTEMS

© Parex USA, Inc. November 2017 • SSS AW300CI 1117