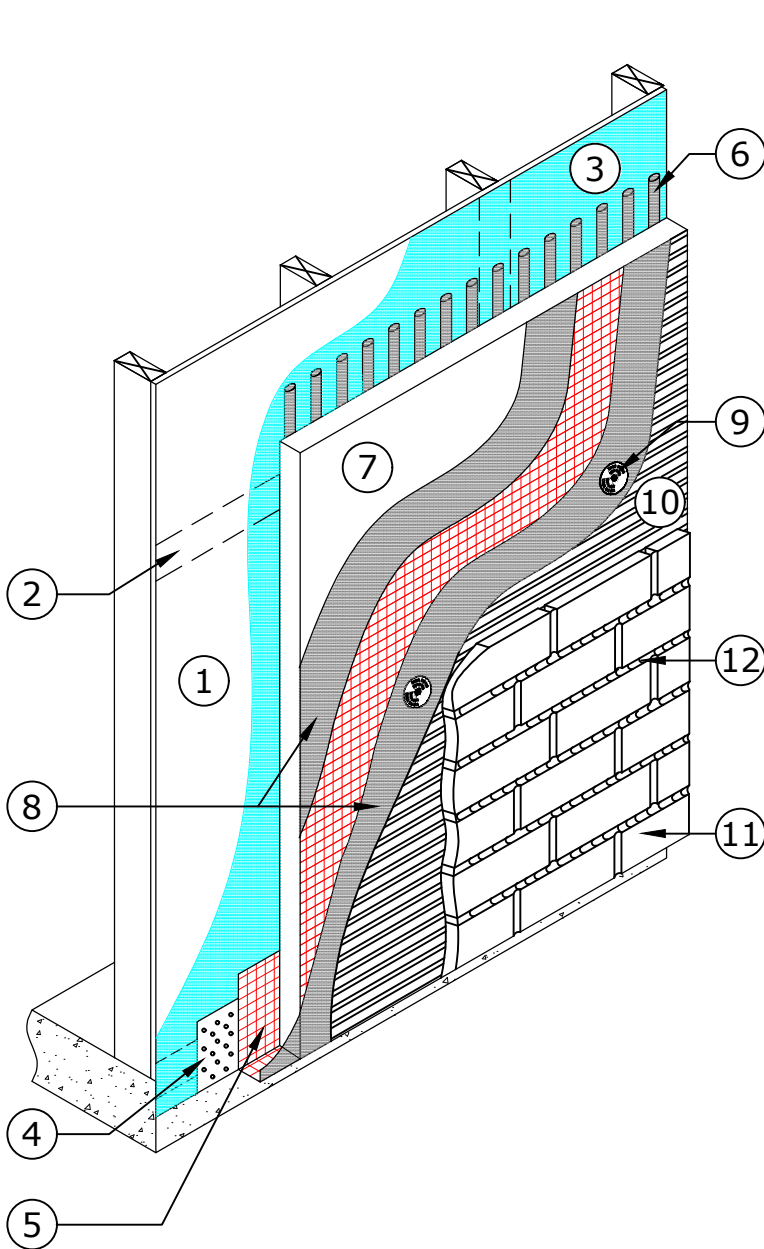


KEY NOTES



- ① SHEATHING
- ② PAREX USA SHEATHING JOINT TAPE EMBEDDED IN PAREX USA WATER RESISTIVE & AIR BARRIER COATING
- ③ PAREX USA WATER-RESISTIVE BARRIERS (SEE NOTE 1)
- ④ PAREX USA DRAINEDGE
- ⑤ MESH BACKWRAP
- ⑥ PAREX USA EPS BASE COAT & ADHESIVE
- ⑦ EXPANDED POLYSTYRENE INSULATION BOARD
- ⑧ PAREX USA REINFORCING MESH EMBEDDED IN PAREX USA EPS BASE COAT & ADHESIVE
- ⑨ MECHANICAL FASTENERS (SUPPLIED BY OTHERS) THROUGH PAREX USA EPS BASE COAT & ADHESIVE AND MESH INTO FRAMING AS REQUIRED BY PAREX USA\
- ⑩ PAREX USA MASONRY VENEER ADHESIVE
- ⑪ ADHERED VENEER
- ⑫ GROUT

MVS-CI G1.01 FRAMED WALL APPLICATION

MASONRY VENEER CONTINUOUS INSULATION DRAINAGE SYSTEM

DATE:04/1/16
SCALE: N.T.S.

NOTES:

1. Parex USA Water-Resistant & Air Barrier options: **A.** WeatherSeal Spray & Roll-On or WeatherSeal Trowel-On (vapor permeable).
B. WeatherBlock SP1 Spray & Roll-On (vapor impermeable).
2. Follow code requirements for adhered veneer dimensions and weights.
3. For alternate veneers contact the Parex USA Technical Service Department.

Disclaimer : The design, specifications, and construction shall comply with all local building codes and standards. Parex USA installation guidelines are for general information and guidance only and Parex USA specifically disclaims any liability for the use of this design, and for design, engineering, or workmanship of any project. The assembly shall be designed to prevent condensation within the assembly. The designer and the user shall provide final drawings and specifications. Products shown other than those manufactured by Parex USA are shown for clarity of the Parex USA product only. Contact the manufacturer of such other products for installation instructions.