

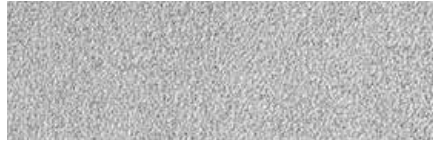


Stucco Pro

Stucco Grade Acrylic Finish



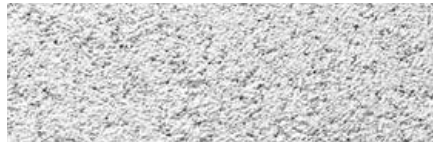
SWIRL



SMOOTH



FINE



COARSE

DESCRIPTION:

- 100% acrylic-based textured finish.
- Dirt Pick-up Resistance (DPR): The surface of the finish hardens and does not soften again under heat. The non-tacky surface provides high resistance to accumulation of dirt, mold, and pollutants.

USES:

Exterior finish coat over:

- Properly prepared stucco, masonry and concrete surfaces.

COMPOSITION:

- 100% acrylic polymer.
- Aggregate: Pure crushed marble, rust-free.
- Water-based: VOC-compliant. Meets SCAQMD Rule 1113 when using Parex USA Non-VOC Colorants.
- Pigment base: Titanium dioxide.
- Colors: Parex USA standard colors or tinted to desired custom color.

CONTAINER:

65 lbs. (29.5 kg) net weight in plastic pails.

- Storage: Protect from direct sunlight and freezing at all times.
- Do not stack pails more than 3 pails high
- Shelf Life: Reference Parex USA Expiration Date of Products Technical Bulletin.

COVERAGE:

Depending on the condition of the substrate and method of application, approximate coverages per pail are:

Smooth

Aggregate size: 0.5mm
280-300 ft² (26-28 m²)

Swirl

Aggregate size: 1.5mm
120-135 ft² (11-12.5 m²)

Fine

Aggregate size: 1.0mm
150-165 ft² (14-15 m²)

Coarse

Aggregate size: 1.5mm
110-125 ft² (10-11.5 m²)

DRYING TIME:

24 hours under normal conditions. High humidity and low temperatures extend drying time.

CLEAN-UP:

Water soluble prior to drying. Clean tools and equipment with water prior to drying.

SURFACE PREPARATION:

- Remove surface contaminants such as dust or dirt without damaging the substrate.
- For previously painted surfaces, all loose and chalking paint must be removed, and glossy surfaces dulled.
- New concrete and masonry must be clean and cured a minimum of 28 days.
- Check concrete surfaces for alkalinity and treat. Any form-release agents or bond breakers must be removed.
- Portland Cement Plaster must be clean and cured a minimum of 7 days or in accordance with Parex Armourwall Specifications.
- Uneven concrete or masonry can be leveled with Stucco Level Coat.
- For interior drywall, prepare as for painting.
- Parex USA recommends the use of primers to enhance the appearance and uniformity of the finish, improve coverage and reduce the chances of efflorescence. This is especially true when using dark colors or finishes with a large aggregate. If specified prime with Parex USA Primer or Variance VariPrime Sanded, refer to Product Data Sheet.
- For additional options, contact Parex USA Technical Services Department.

MIXING:

- Use clean equipment for mixing and preparation.
- Stir to obtain a homogeneous consistency using a heavy-duty 1/2-in. (13mm) drill with a rust free paddle at 400-500 rpm. Avoid air entrainment.
- Add liquid color to the pail of finish. Make sure all of the color is added by rinsing out the color vial with water (1/3 of the vial's volume) into the pail.
- Add the amount of water needed (up to a maximum of 16 oz. per pail) to achieve finish texture. To avoid color variations, add the same amount of water to each pail of finish.

APPLICATION:

- Read the entire label before using this product.
- Always maintain a wet edge and work to corners or joints. For best color consistency, use finish with the same batch number within a wall section. For more information, see Technical Bulletin: "Boxing Acrylic Finishes".
- Keep container closed when not in use.
- Use a clean stainless steel trowel and apply a uniform coat the thickness of the largest aggregate size of the finish.
- Texturing Parex Stucco Pro Fine, Swirl and Coarse Finishes: Use a clean plastic float or a stainless steel trowel. A plastic float will roll the large aggregates more than a stainless steel trowel and may cause swirling. Continuously dry clean the plastic float or steel trowel while texturing. Use consistent pressure and motion to achieve the desired texture.
- Texturing Smooth Finish:
 - Optional: Level stucco brown coats with Stucco Level Coat and let dry prior to finish application.
 - Smooth Finish cannot generally be floated. Texture will be "as trowelled."
 - Smooth Finish can be trowelled smooth to simulate the texture of limestone.

- For smoothest application, apply in two tight coats. Allow first coat to dry enough that it will not be disturbed during application of the second coat. When second coat is partially dry, trowel to desired smoothness. Light, consistent misting with water during smoothing will increase smoothness. Variations in color tint and smoothness should be expected.

- Spray application: To achieve consistent texture, spray application must use consistent motion, pressure, distance and spray angle. A job-site mock-up for spray application is advised.

LIMITATIONS:

- Ambient and surface temperature must be 40°F (4°C) or higher during application and drying time. Supplemental heat and protection from precipitation must be provided as needed.
- Use only on surfaces that are sound, clean, dry and free from any residue that might affect the ability of the finish to bond to the surface.
- Application in direct sunlight in hot weather may adversely affect aesthetics.
- Not for use with EIFS.
- Parex USA is not responsible for color correctness after finish has been applied.

WARNING:

- Read complete Warning information printed on product container prior to use. For medical emergency information, call 1-800-424-9300.
- For more information on handling this product refer to its Safety Data Sheet (SDS). The most current SDS and Product Data Sheet (PDS) can be found on our website.
- This Product Data Sheet has been prepared in good faith on the basis of information available at the time of publication. It is intended to provide users with information about the guidelines for the proper use and application of the covered product(s) under normal environmental and working conditions. Because each project is different, Parex USA, Inc. cannot be responsible for the consequences of variations in such conditions, or for unforeseen conditions.

Parex USA, Inc.
4125 E. La Palma Ave., Suite 250
Anaheim, CA 92807
(866) 516-0061 Tech Support: (800) 226-2424

Facilities

French Camp, CA
North Hollywood, CA
Riverside, CA
San Diego, CA

Colorado Springs, CO
Haines City, FL
Duluth, GA
Redan, GA

Albuquerque, NM
Allentown, PA
San Antonio, TX

