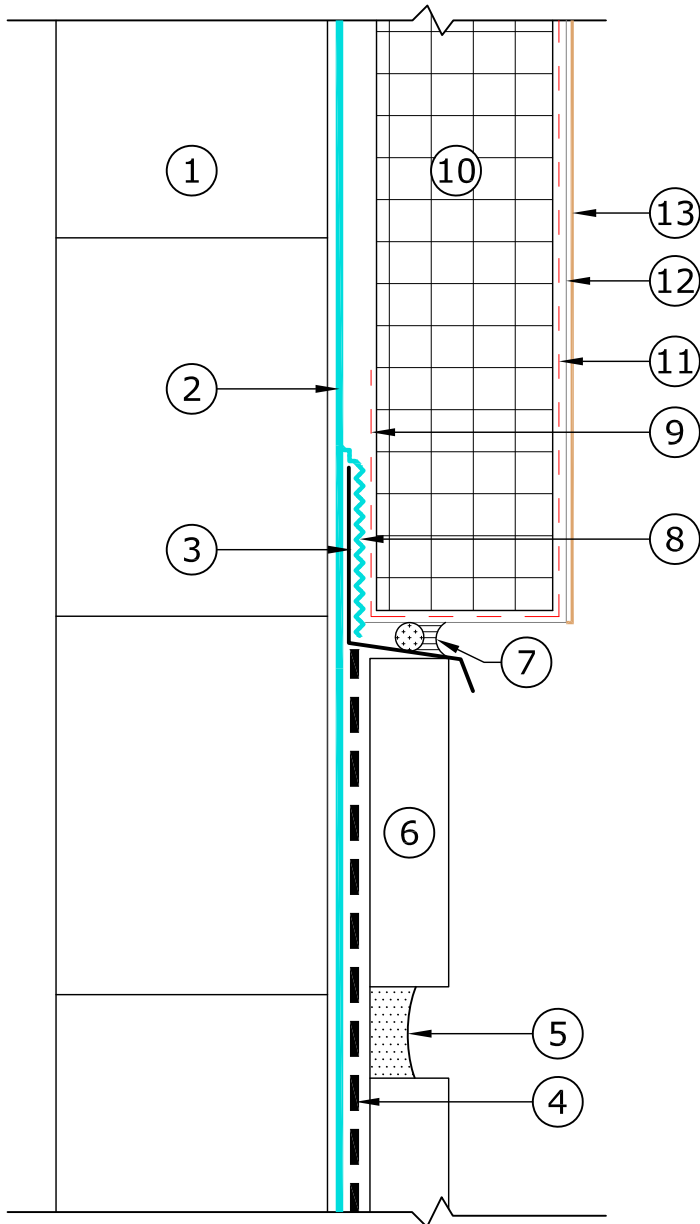


KEY NOTES



- ① CMU
- ② PAREX USA WEATHERBLOCK SP1, (SEE NOTE 2)
- ③ NON CORROSIVE METAL DRIP EDGE (BY OTHERS)
- ④ PAREX USA MASONRY VENEER ADHESIVE
- ⑤ GROUT
- ⑥ MASONRY VENEER, (SEE NOTE 3)
- ⑦ BACKER ROD & ELASTOMERIC SEALANT W/ WEEP HOLES SPACED @ 16" O.C. (BY OTHERS)
- ⑧ PAREX USA SHEATHING JOINT TAPE OVERLAPPED AND EMBEDDED IN PAREX USA WATER RESISTIVE BARRIER
- ⑨ PAREX USA REINFORCING MESH BACKWRAP
- ⑩ PAREX USA APPROVED INSULATION BOARD ADHERED WITH VERTICAL RIBBONS OF PAREX USA BASECOAT ADHESIVE
- ⑪ PAREX USA REINFORCING MESH EMBEDDED IN PAREX USA BASECOAT & ADHESIVE
- ⑫ PAREX USA BASECOAT
- ⑬ PAREX USA FINISH

MVS - CMU - T1.03 TERMINATION WITH EIFS

MASONRY VENEER CMU SYSTEM

DATE: 01/01/17
SCALE: N.T.S.

NOTES:

1. WeatherBlock SP1 Spray & Roll-On (vapor impermeable). (OPTIONAL)
2. Follow code requirements for Adhered Veneer dimensions and weights.

Disclaimer : The design, specifications, and construction shall comply with all local building codes and standards. Parex USA installation guidelines are for general information and guidance only and Parex USA specifically disclaims any liability for the use of this design, and for design, engineering, or workmanship of any project. The assembly shall be designed to prevent condensation within the assembly. The designer and the user shall provide final drawings and specifications. Products shown other than those manufactured by Parex USA are shown for clarity of the Parex USA product only. Contact the manufacturer of such other products for installation instructions.