

## PAREX PANELIZED EIFS DETAILS

### TABLE OF CONTENTS

SPS G 1.01 EDGE WRAP PANEL TERMINATION

SPS G1.01A OUTSIDE CORNER TERMINATION

SPS G1.01B INSIDE CORNER TERMINATION

SPS P1.01A PLANNED PENETRATION (2D)

SPS P1.01B PLANNED PENETRATION (ISO)

SPS T1.01A TERMINATION AT FOUNDATION (2D)

SPS T1.01B TERMINATION AT FOUNDATION (ISO)

SPS T1.02A TERMINATION AT CLADDING TRANSITION (2D)

SPS T1.02B TERMINATION AT CLADDING TRANSITION (ISO)

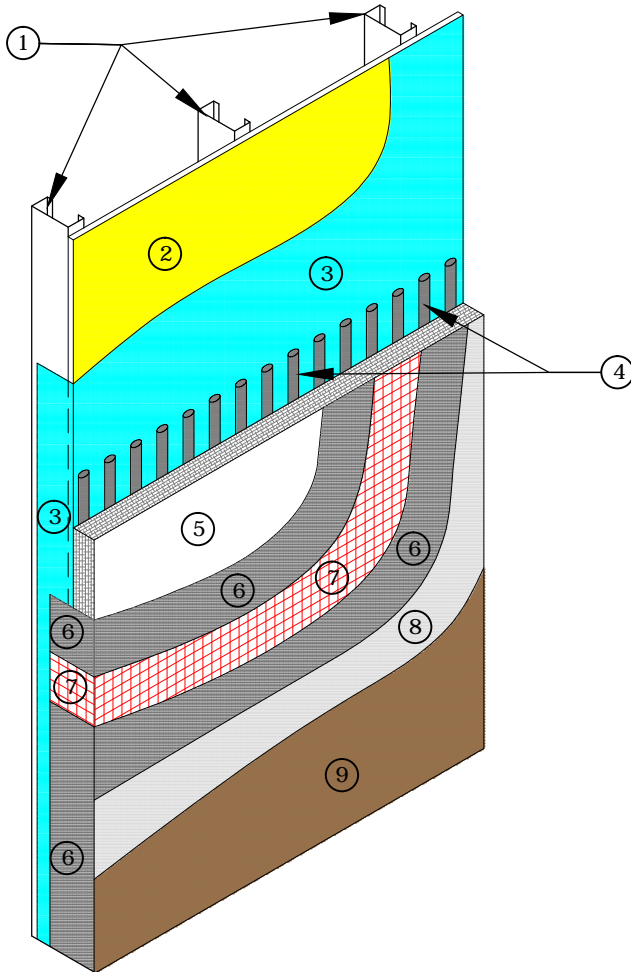
SPS E 1.01 VERTICAL PANEL JOINT

SPS E1.01 HORIZONTAL PANEL JOINT

SPS D1.01 PANEL TO PANEL DRAINAGE

### KEY NOTES

- ① PANEL FRAMING BY OTHERS
- ② SUBSTRATE
- ③ PAREX USA WATER-RESISTIVE AND AIR BARRIER COATING
- ④ PAREX USA ADHESIVE RUNNING VERTICAL
- ⑤ EXPANDED POLYSTYRENE INSULATION BOARD (EPS)
- ⑥ PAREX USA BASECOAT
- ⑦ PAREX USA REINFORCING MESH EMBEDDED IN PAREX USA BASE COAT WRAPPED ONTO FRAMING
- ⑧ PAREX USA PRIMER (OPTIONAL)
- ⑨ PAREX USA FINISH



### SPS G1.01 EDGE WRAP PANEL TERMINATION

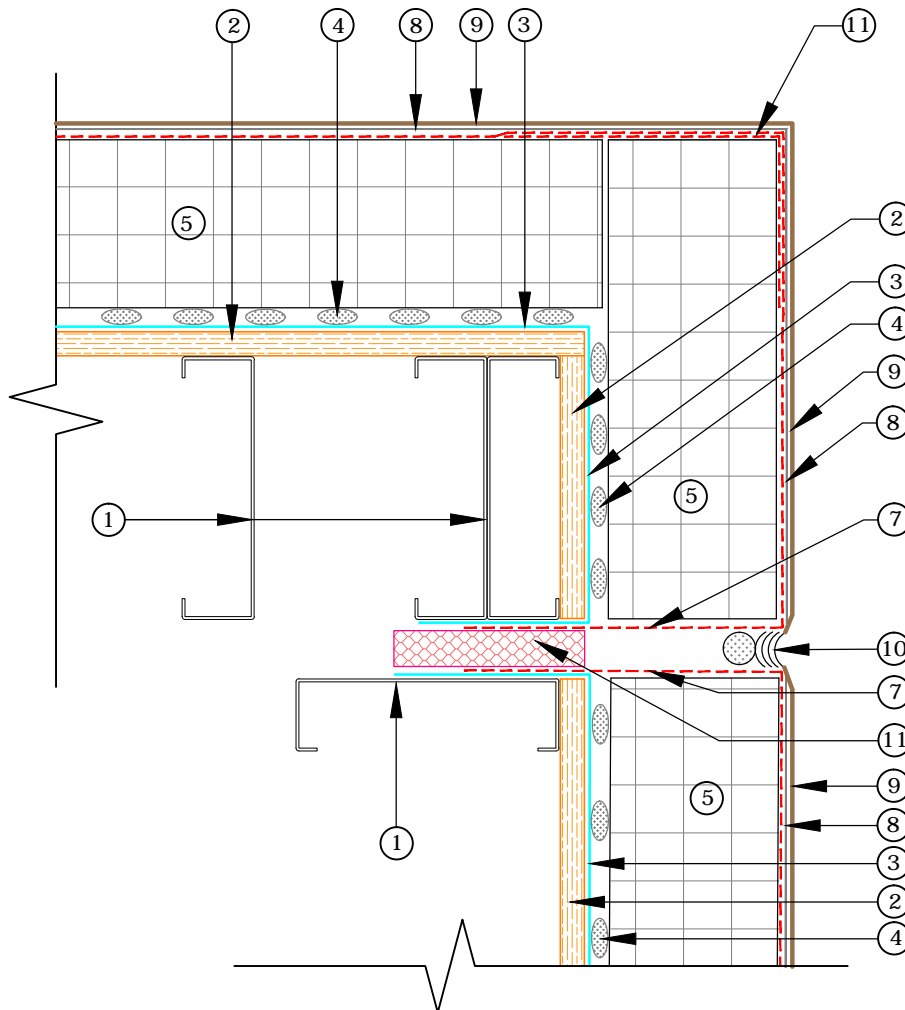
#### PAREX EIFS PANELIZED SYSTEM

#### NOTES:

1. APPLY PAREX USA WATER-RESISTIVE AND AIR BARRIER COATING TO FRAMING AT PANEL ENDS TO PROVIDE CONTINUOUS BARRIER.
2. WRAP BASE COAT AND REINFORCING MESH A MINIMUM OF 2 1/2 INCHES ONTO FRAMING AT PANEL EDGES.
3. DO NOT APPLY FINISH COAT ONTO SURFACES TO RECEIVE SEALANT.
4. SOME COPING SYSTEMS HAVE AN INNER MEMBRANE THAT DRAINS BEHIND THE METAL FLASHING. DO NOT BLOCK DRAINAGE OF THESE MEMBRANES WITH SEALANT.

Disclaimer: The design, specifications, and construction shall comply with all local building codes and standards. Parex USA installation guidelines are for general information and guidance only and Parex USA specifically disclaims any liability for the use of this design, and for design, engineering, or workmanship of any project. The assembly shall be designed to prevent condensation within the assembly. The designer and the user shall provide final drawings and specifications. Products shown other than those manufactured by Parex USA are shown for clarity of the Parex USA product only. Contact the manufacturer of such other products for installation instructions.

### KEY NOTES



- ① PANEL FRAMING BY OTHERS
- ② SUBSTRATE
- ③ PAREX USA WATER-RESISTIVE AND AIR BARRIER COATING
- ④ PAREX USA ADHESIVE RUNNING VERTICAL
- ⑤ EXPANDED POLYSTYRENE INSULATION BOARD (EPS)
- ⑥ PAREX USA BASECOAT
- ⑦ PAREX USA REINFORCING MESH EMBEDDED IN PAREX USA BASE COAT WRAPPED ONTO FRAMING
- ⑧ PAREX USA PRIMER (OPTIONAL)
- ⑨ PAREX USA FINISH
- ⑩ BACKER ROD & SEALANT (BY OTHERS)
- ⑪ INTERIOR AIR SEAL (BY OTHERS)

### SPS G1.02A OUTSIDE CORNER TERMINATION

#### PAREX EIFS PANELIZED SYSTEM

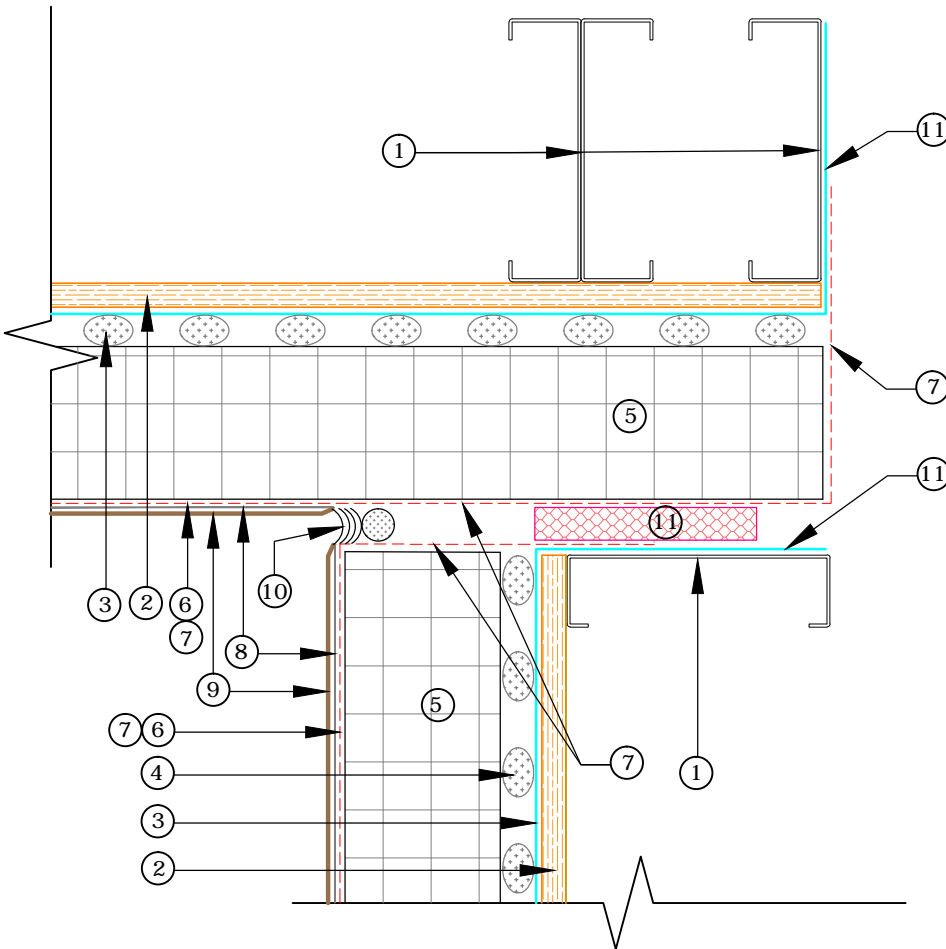
#### NOTES:

1. APPLY PAREX USA WATER-RESISTIVE AND AIR BARRIER COATING TO FRAMING AT PANEL ENDS TO PROVIDE CONTINUOUS BARRIER.
2. WRAP BASE COAT AND REINFORCING MESH A MINIMUM OF 2 1/2 INCHES ONTO FRAMING AT PANEL EDGES.
3. DO NOT APPLY FINISH COAT ONTO SURFACES TO RECEIVE SEALANT.
4. DOUBLED CORNER MESH SHALL LAP CORNER 4 INCHES EACH WAY.
5. FRAMING SHOWN IS SCHEMATIC ONLY. PROJECT SPECIFIC FRAMING SHALL BE AS DESIGNED AND DETAILED BY THE STRUCTURAL ENGINEER.

Disclaimer: The design, specifications, and construction shall comply with all local building codes and standards. Parex USA installation guidelines are for general information and guidance only and Parex USA specifically disclaims any liability for the use of this design, and for design, engineering, or workmanship of any project. The assembly shall be designed to prevent condensation within the assembly. The designer and the user shall provide final drawings and specifications. Products shown other than those manufactured by Parex USA are shown for clarity of the Parex USA product only. Contact the manufacturer of such other products for installation instructions.

## KEY NOTES

- ① PANEL FRAMING BY OTHERS
- ② SUBSTRATE
- ③ PAREX USA WATER-RESISTIVE AND AIR BARRIER COATING
- ④ PAREX USA ADHESIVE RUNNING VERTICAL
- ⑤ EXPANDED POLYSTYRENE INSULATION BOARD (EPS)
- ⑥ PAREX USA BASECOAT
- ⑦ PAREX USA REINFORCING MESH EMBEDDED IN PAREX USA BASE COAT WRAPPED ONTO FRAMING
- ⑧ PAREX USA PRIMER (OPTIONAL)
- ⑨ PAREX USA FINISH
- ⑩ BACKER ROD & SEALANT (BY OTHERS)
- ⑪ INTERIOR AIR SEAL (BY OTHERS)



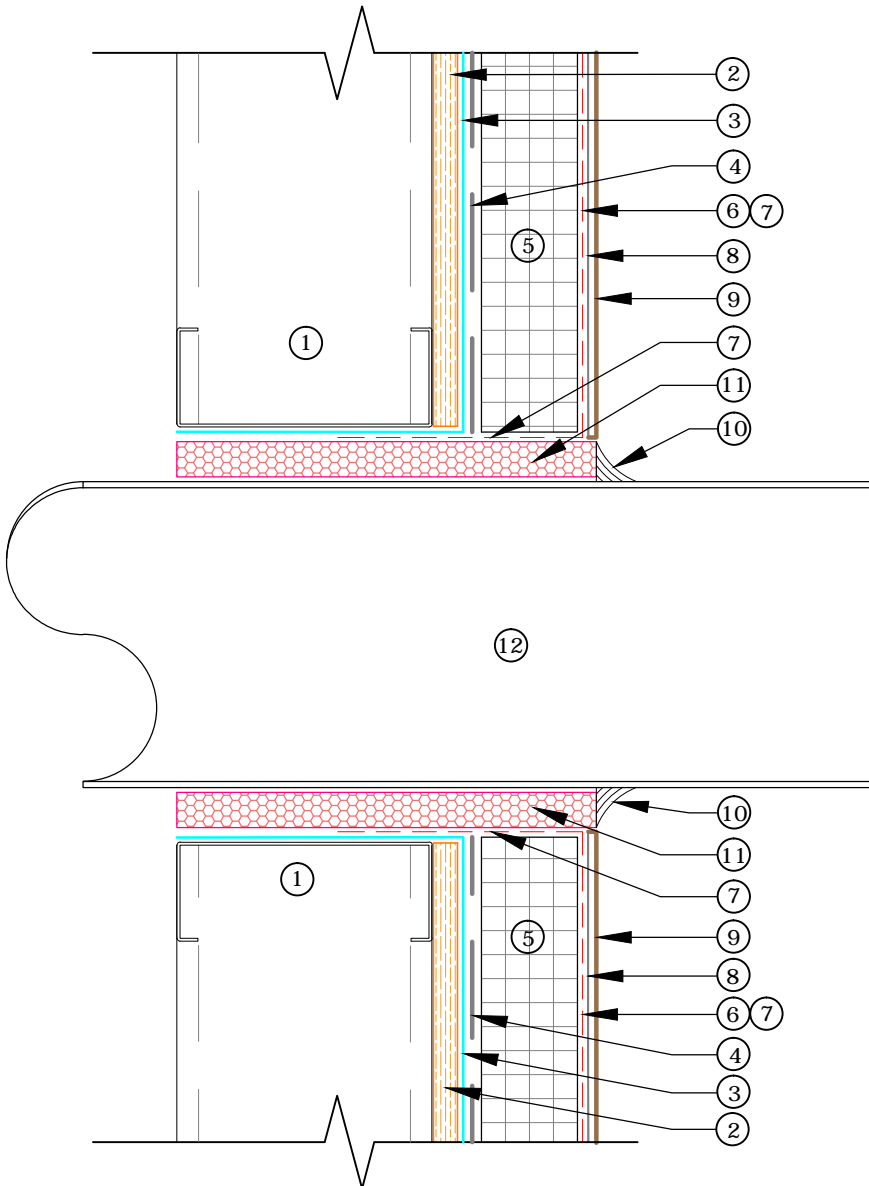
## SPS G1.02B INSIDE CORNER TERMINATION

### PAREX EIFS PANELIZED SYSTEM

#### NOTES:

1. WRAP BASE COAT AND REINFORCING MESH A MINIMUM OF 2 1/2 INCHES ONTO FRAMING AT PANEL EDGES.
2. DO NOT APPLY FINISH COAT ONTO SURFACES TO RECEIVE SEALANT.
3. FRAMING SHOWN IS SCHEMATIC ONLY. PROJECT SPECIFIC FRAMING SHALL BE AS DESIGNED AND DETAILED BY THE STRUCTURAL ENGINEER.
4. APPLY PAREX USA WATER-RESISTANT AND AIR BARRIER COATING TO FRAMING AT PANEL EDGES TO PROVIDE CONTINUOUS BARRIER.

Disclaimer: The design, specifications, and construction shall comply with all local building codes and standards. Parex USA installation guidelines are for general information and guidance only and Parex USA specifically disclaims any liability for the use of this design, and for design, engineering, or workmanship of any project. The assembly shall be designed to prevent condensation within the assembly. The designer and the user shall provide final drawings and specifications. Products shown other than those manufactured by Parex USA are shown for clarity of the Parex USA product only. Contact the manufacturer of such other products for installation instructions.



## KEY NOTES

- ① PANEL FRAMING BY OTHERS
- ② SUBSTRATE
- ③ PAREX USA WATER-RESISTIVE AND AIR BARRIER COATING
- ④ PAREX USA ADHESIVE RUNNING VERTICAL
- ⑤ EXPANDED POLYSTYRENE INSULATION BOARD (EPS)
- ⑥ PAREX USA BASECOAT
- ⑦ PAREX USA REINFORCING MESH EMBEDDED IN PAREX USA BASE COAT WRAPPED ONTO FRAMING
- ⑧ PAREX USA PRIMER (OPTIONAL)
- ⑨ PAREX USA FINISH
- ⑩ SEALANT (BY OTHERS)
- ⑪ INTERIOR AIR SEAL (BY OTHERS)
- ⑫ PLANNED PENETRATION (BY OTHERS)

## SPS P1.01A PLANNED PENETRATION (2D)

### PAREX EIFS PANELIZED SYSTEM

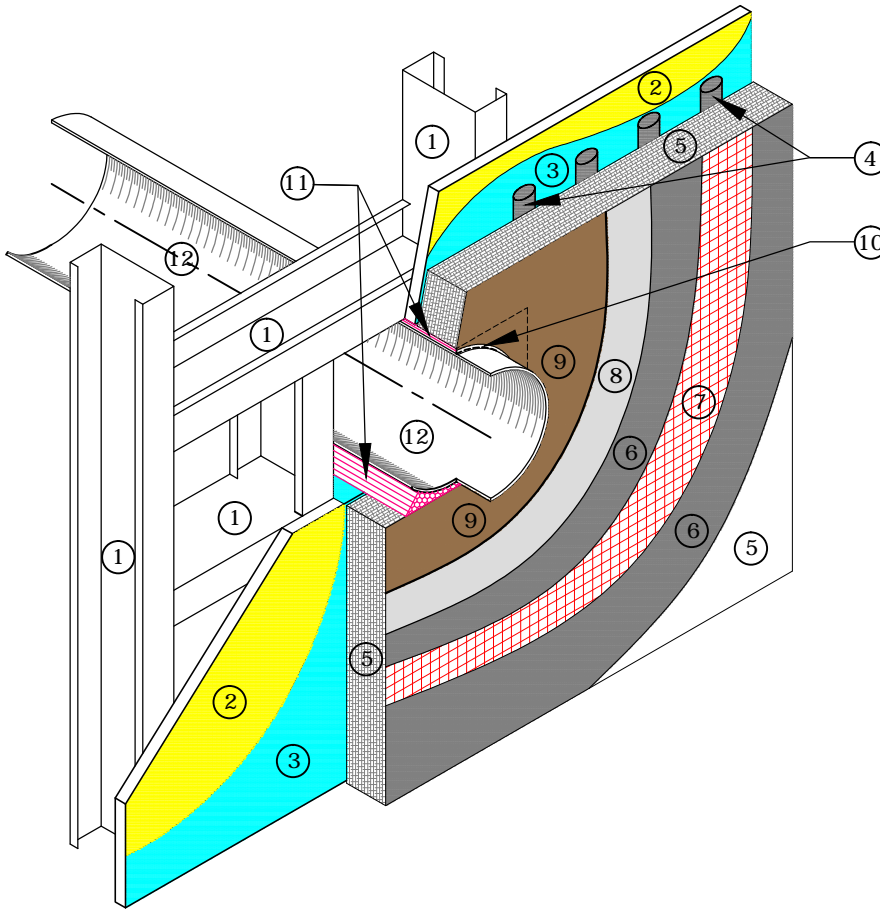
#### NOTES:

1. APPLY PAREX USA WATER-RESISTIVE AND AIR BARRIER COATING ONTO FRAMING AT PANEL EDGES FOR CONTINUOUS BARRIER.
2. WRAP BASE COAT AND REINFORCING MESH A MINIMUM OF 2 1/2 INCHES ONTO FRAMING AT PANEL EDGES.
3. DO NOT APPLY FINISH COAT ONTO SURFACES TO RECEIVE SEALANT.
4. SOME COPING SYSTEMS HAVE AN INNER MEMBRANE THAT DRAINS BEHIND METAL FLASHING. DO NOT BLOCK DRAINAGE OF THESE MEMBRANES WITH SEALANT.

Disclaimer: The design, specifications, and construction shall comply with all local building codes and standards. Parex USA installation guidelines are for general information and guidance only and Parex USA specifically disclaims any liability for the use of this design, and for design, engineering, or workmanship of any project. The assembly shall be designed to prevent condensation within the assembly. The designer and the user shall provide final drawings and specifications. Products shown other than those manufactured by Parex USA are shown for clarity of the Parex USA product only. Contact the manufacturer of such other products for installation instructions.

### KEY NOTES

- ① PANEL FRAMING BY OTHERS
- ② SUBSTRATE
- ③ PAREX USA WATER-RESISTIVE AND AIR BARRIER COATING
- ④ PAREX USA ADHESIVE RUNNING VERTICAL
- ⑤ EXPANDED POLYSTYRENE INSULATION BOARD (EPS)
- ⑥ PAREX USA BASECOAT
- ⑦ PAREX USA REINFORCING MESH EMBEDDED IN PAREX USA BASE COAT WRAPPED ONTO FRAMING
- ⑧ PAREX USA PRIMER (OPTIONAL)
- ⑨ PAREX USA FINISH
- ⑩ CONTINUOUS SEALANT (BY OTHERS)
- ⑪ INTERIOR AIR SEAL (BY OTHERS)
- ⑫ PLANNED PENETRATION (BY OTHERS)



### SPS P1.01B PLANNED PENETRATION (ISO)

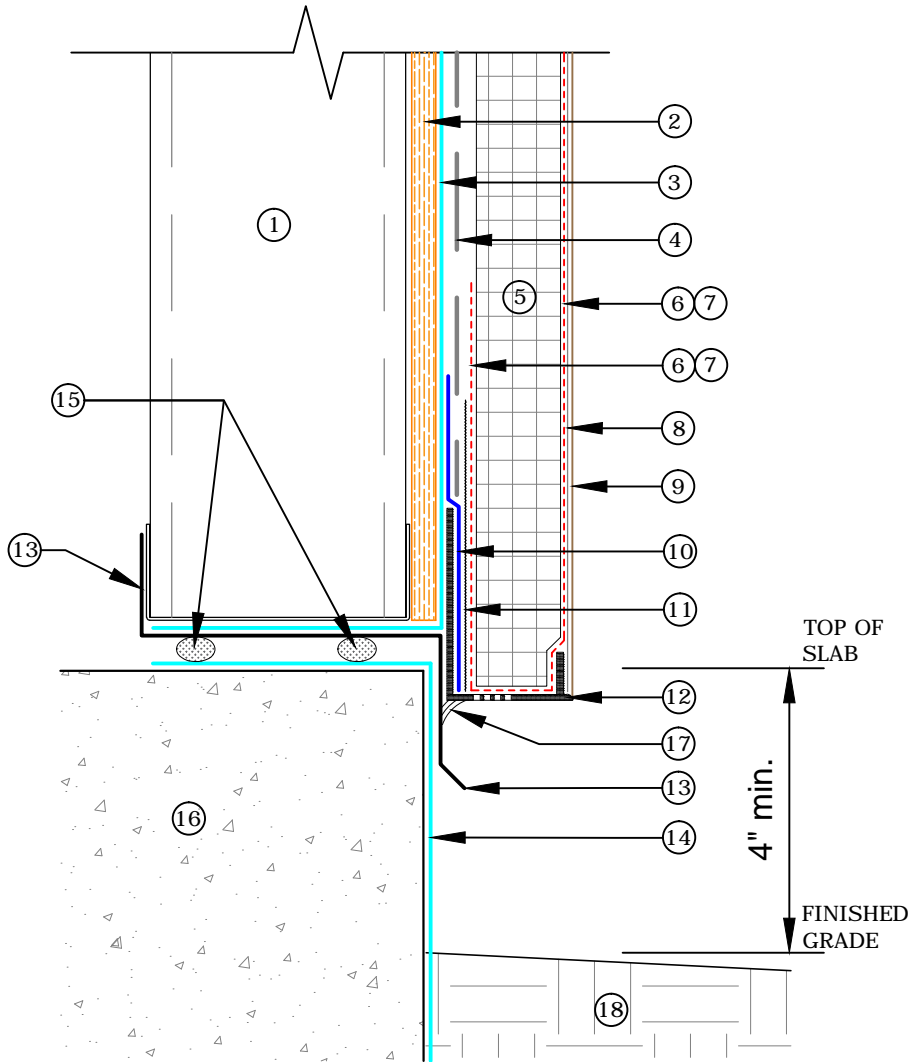
#### PAREX EIFS PANELIZED SYSTEM

#### NOTES:

1. APPLY PAREX USA WATER-RESISTIVE AND AIR BARRIER COATING ONTO FRAMING AT PANEL EDGES FOR CONTINUOUS BARRIER.
2. WRAP BASE COAT AND REINFORCING MESH A MINIMUM OF 2 1/2 INCHES ONTO FRAMING AT PANEL EDGES.
3. DO NOT APPLY FINISH COAT ONTO SURFACES TO RECEIVE SEALANT.
4. SOME COPING SYSTEMS HAVE AN INNER MEMBRANE THAT DRAINS BEHIND METAL FLASHING. DO NOT BLOCK DRAINAGE OF THESE MEMBRANES WITH SEALANT.
5. TO ENSURE A CONTINUOUS AIR BARRIER ACROSS THE BUILDING ENVELOPE, A CONTINUOUS AIR SEAL SHOULD BE MADE AT EACH SUBSTRATE CHANGE, JOINTS/GAPS, PENETRATIONS AND DISSIMILAR MATERIAL TERMINATIONS. THESE MUST BE A CONSIDERATION OF THE DESIGNER IN THE OVERALL WALL ASSEMBLY DESIGN.

Disclaimer: The design, specifications, and construction shall comply with all local building codes and standards. Parex USA installation guidelines are for general information and guidance only and Parex USA specifically disclaims any liability for the use of this design, and for design, engineering, or workmanship of any project. The assembly shall be designed to prevent condensation within the assembly. The designer and the user shall provide final drawings and specifications. Products shown other than those manufactured by Parex USA are shown for clarity of the Parex USA product only. Contact the manufacturer of such other products for installation instructions.

## PAREX EIFS PANELIZED SYSTEM



### KEY NOTES

- ① PANEL FRAMING BY OTHERS
- ② SUBSTRATE
- ③ PAREX USA WATER-RESISTIVE AND AIR BARRIER COATING
- ④ PAREX USA ADHESIVE RUNNING VERTICAL
- ⑤ EXPANDED POLYSTYRENE INSULATION BOARD (EPS)
- ⑥ PAREX USA BASECOAT
- ⑦ PAREX USA REINFORCING MESH EMBEDDED IN PAREX USA BASE COAT BACK WRAPPED TO EPS
- ⑧ PAREX USA PRIMER (OPTIONAL)
- ⑨ PAREX USA FINISH
- ⑩ PAREX USA SHEATHING JOINT TAPE EMBEDDED IN PAREX USA WATER RESISTIVE & AIR BARRIER COATING
- ⑪ PAREX USA DRAINEDGE
- ⑫ VENTED TRACK
- ⑬ METAL THRU FLASHING
- ⑭ WATER PROOFING (BY OTHERS)
- ⑮ CONTINUOUS CONSTRUCTION ADHESIVE/SEALANT
- ⑯ FOUNDATION (BY OTHERS)
- ⑰ CONTINUOUS BEAD OF SEALANT
- ⑱ FINISHED GRADE

### SPS T1.01A TERMINATION AT FOUNDATION (2D)

#### PAREX EIFS PANELIZED SYSTEM

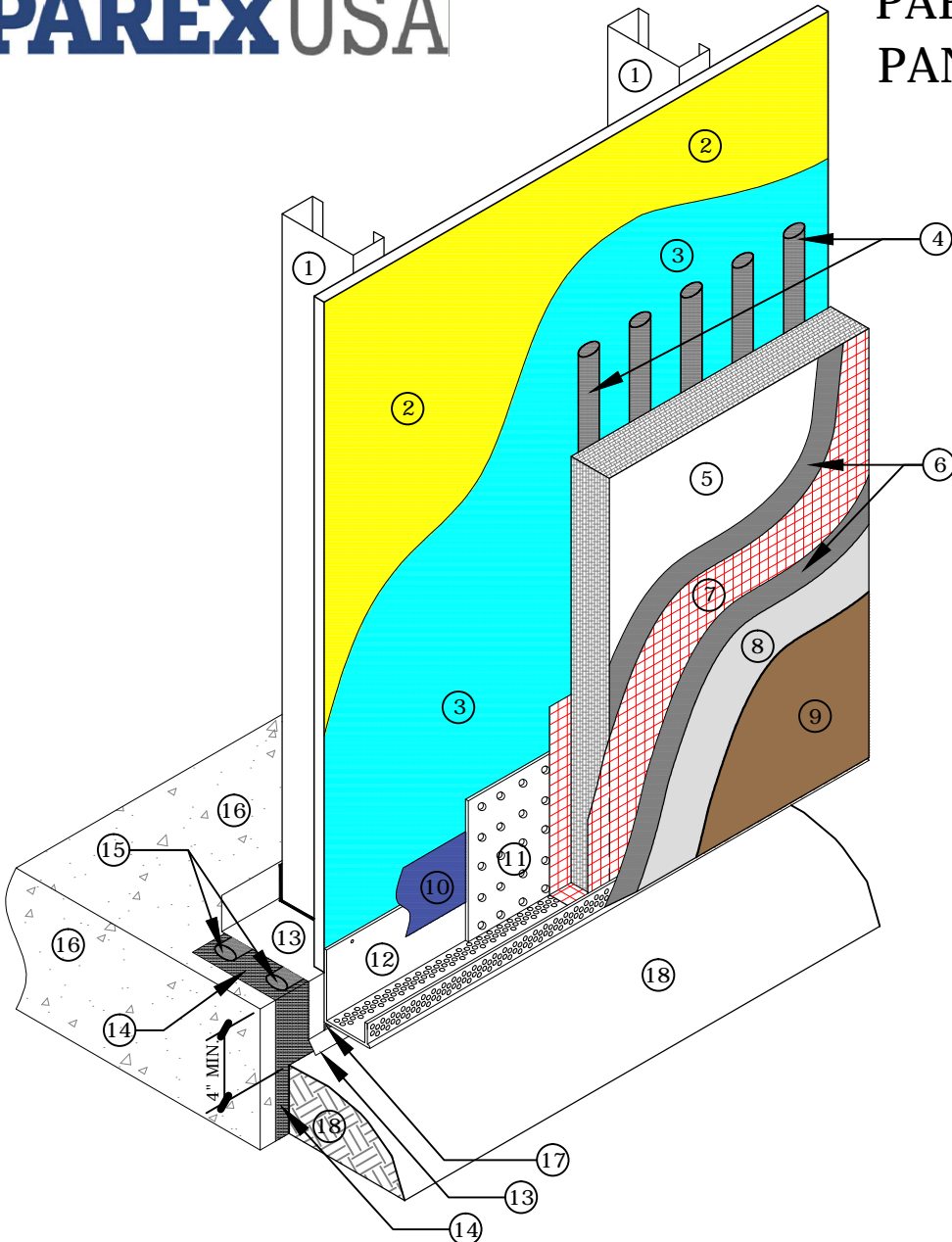
##### NOTES:

1. APPLY PAREX USA WATER-RESISTIVE AND AIR BARRIER COATING ONTO FRAMING AT PANEL EDGES FOR CONTINUOUS BARRIER.
2. WRAP BASE COAT AND REINFORCING MESH A MINIMUM OF 2 1/2 INCHES ONTO FRAMING AT PANEL EDGES.
3. DO NOT APPLY FINISH COAT ONTO SURFACES TO RECEIVE SEALANT.
4. SOME COPING SYSTEMS HAVE AN INNER MEMBRANE THAT DRAINS BEHIND METAL FLASHING. DO NOT BLOCK DRAINAGE OF THESE MEMBRANES WITH SEALANT.
5. TO ENSURE A CONTINUOUS AIR BARRIER ACROSS THE BUILDING ENVELOPE, A CONTINUOUS AIR SEAL SHOULD BE MADE AT EACH SUBSTRATE CHANGE, JOINTS/GAPS, PENETRATIONS AND DISSIMILAR MATERIAL TERMINATIONS. THESE MUST BE A CONSIDERATION OF THE DESIGNER IN THE OVERALL WALL ASSEMBLY DESIGN.

Disclaimer: The design, specifications, and construction shall comply with all local building codes and standards. Parex USA installation guidelines are for general information and guidance only and Parex USA specifically disclaims any liability for the use of this design, and for design, engineering, or workmanship of any project. The assembly shall be designed to prevent condensation within the assembly. The designer and the user shall provide final drawings and specifications. Products shown other than those manufactured by Parex USA are shown for clarity of the Parex USA product only. Contact the manufacturer of such other products for installation instructions.

## PAREX EIFS PANELIZED SYSTEM

### KEY NOTES



- ① PANEL FRAMING BY OTHERS
- ② SUBSTRATE
- ③ PAREX USA WATER-RESISTIVE AND AIR BARRIER COATING
- ④ PAREX USA ADHESIVE RUNNING VERTICAL
- ⑤ EXPANDED POLYSTYRENE INSULATION BOARD (EPS)
- ⑥ PAREX USA BASECOAT
- ⑦ PAREX USA REINFORCING MESH EMBEDDED IN PAREX USA BASE COAT BACK WRAPPED TO EPS
- ⑧ PAREX USA PRIMER (OPTIONAL)
- ⑨ PAREX USA FINISH
- ⑩ PAREX USA SHEATHING JOINT TAPE EMBEDDED IN PAREX USA WATER RESISTIVE & AIR BARRIER COATING
- ⑪ PAREX USA DRAINEDGE
- ⑫ VENTED TRACK
- ⑬ METAL THRU FLASHING
- ⑭ WATER PROOFING (BY OTHERS)
- ⑮ CONTINUOUS CONSTRUCTION ADHESIVE/SEALANT
- ⑯ FOUNDATION (BY OTHERS)
- ⑰ CONTINUOUS BEAD OF SEALANT
- ⑱ FINISHED GRADE

### SPS T1.01B TERMINATION AT FOUNDATION (ISO)

#### PAREX EIFS PANELIZED SYSTEM

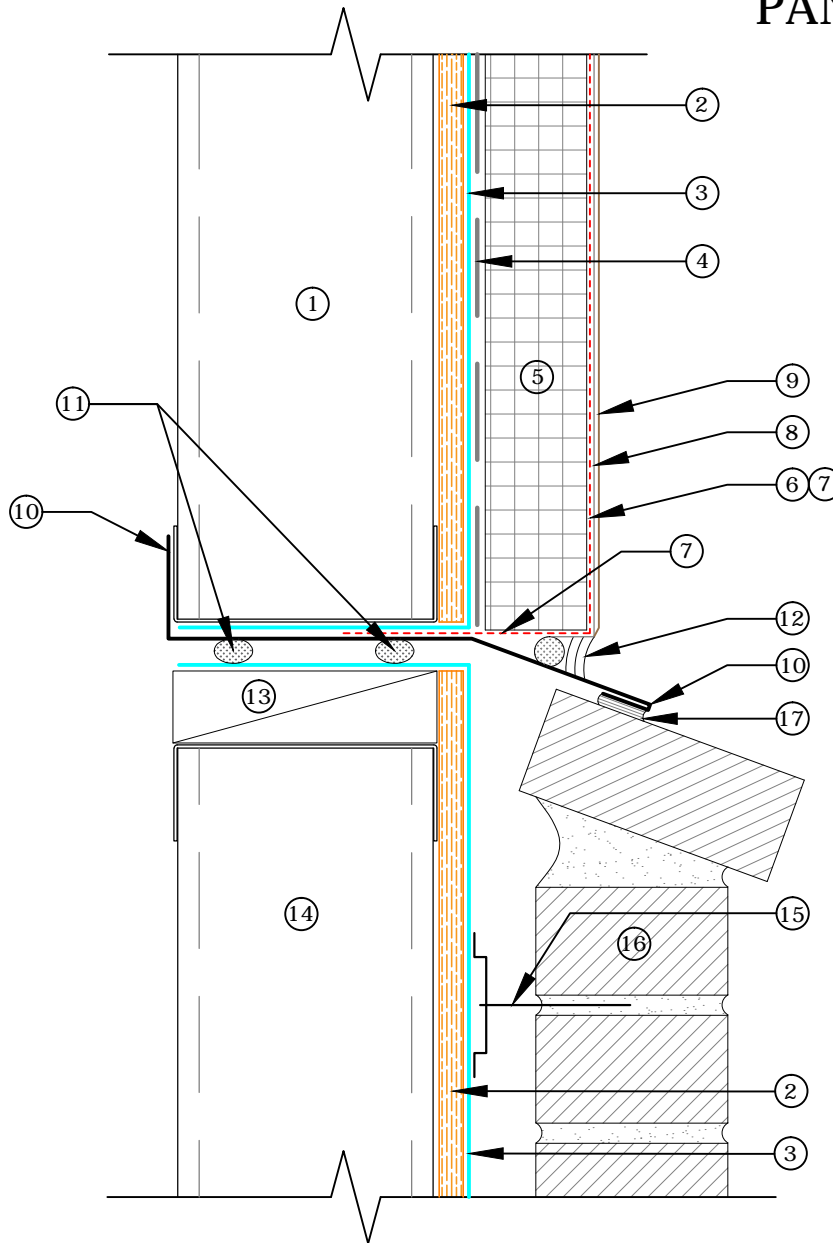
##### NOTES:

1. APPLY PAREX USA WATER-RESISTIVE AND AIR BARRIER COATING ONTO FRAMING AT PANEL EDGES FOR CONTINUOUS BARRIER.
2. WRAP BASE COAT AND REINFORCING MESH A MINIMUM OF 2 1/2 INCHES ONTO FRAMING AT PANEL EDGES.
3. DO NOT APPLY FINISH COAT ONTO SURFACES TO RECEIVE SEALANT.
4. SOME COPING SYSTEMS HAVE AN INNER MEMBRANE THAT DRAINS BEHIND METAL FLASHING. DO NOT BLOCK DRAINAGE OF THESE MEMBRANES WITH SEALANT.
5. TO ENSURE A CONTINUOUS AIR BARRIER ACROSS THE BUILDING ENVELOPE, A CONTINUOUS AIR SEAL SHOULD BE MADE AT EACH SUBSTRATE CHANGE, JOINTS/GAPS, PENETRATIONS AND DISSIMILAR MATERIAL TERMINATIONS. THESE MUST BE A CONSIDERATION OF THE DESIGNER IN THE OVERALL WALL ASSEMBLY DESIGN.

Disclaimer: The design, specifications, and construction shall comply with all local building codes and standards. Parex USA installation guidelines are for general information and guidance only and Parex USA specifically disclaims any liability for the use of this design, and for design, engineering, or workmanship of any project. The assembly shall be designed to prevent condensation within the assembly. The designer and the user shall provide final drawings and specifications. Products shown other than those manufactured by Parex USA are shown for clarity of the Parex USA product only. Contact the manufacturer of such other products for installation instructions.



## PAREX EIFS PANELIZED SYSTEM



### KEY NOTES

- ① PANEL FRAMING BY OTHERS
- ② SUBSTRATE
- ③ PAREX USA WATER-RESISTIVE AND AIR BARRIER COATING
- ④ PAREX USA ADHESIVE RUNNING VERTICAL
- ⑤ EXPANDED POLYSTYRENE INSULATION BOARD (EPS)
- ⑥ PAREX USA BASECOAT
- ⑦ PAREX USA REINFORCING MESH EMBEDDED IN PAREX USA BASE COAT WRAPPED ONTO FRAME
- ⑧ PAREX USA PRIMER (OPTIONAL)
- ⑨ PAREX USA FINISH
- ⑩ METAL THRU FLASHING
- ⑪ CONTINUOUS CONSTRUCTION ADHESIVE/SEALANT
- ⑫ BACKER ROD & SEALANT
- ⑬ WOOD BLOCKING (BY OTHERS)
- ⑭ WALL FRAMING (BY OTHERS)
- ⑮ ADJUSTABLE BRICK VENEER WALL TIES (BY OTHERS)
- ⑯ BRICK VENEER (BY OTHERS)
- ⑰ SEALANT (BY OTHERS)

### SPS T1.02A TERMINATION AT CLADDING TRANSITION (2D)

#### STANDARD EIFS PANELIZED SYSTEM

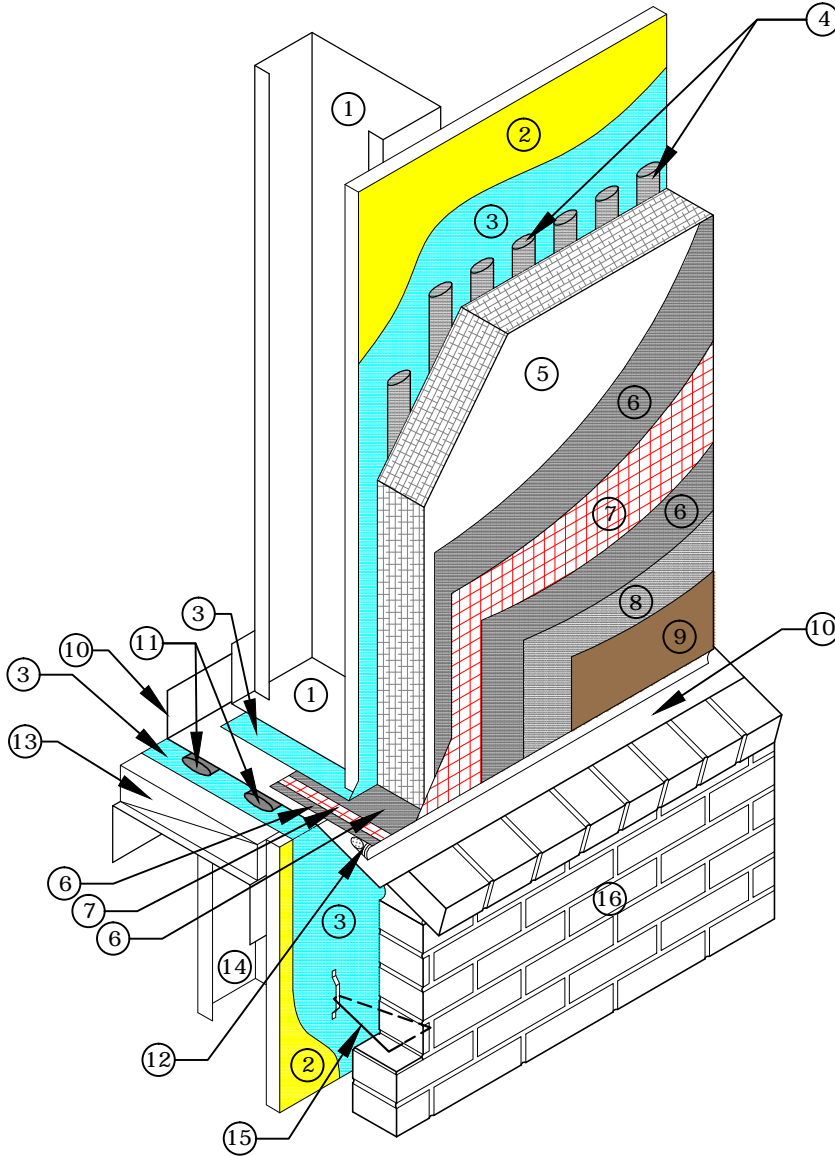
#### NOTES:

1. APPLY PAREX USA WATER-RESISTIVE AND AIR BARRIER COATING ONTO FRAMING AT PANEL EDGES FOR CONTINUOUS BARRIER.
2. WRAP BASE COAT AND REINFORCING MESH A MINIMUM OF 2 1/2 INCHES ONTO FRAMING AT PANEL EDGES.
3. DO NOT APPLY FINISH COAT ONTO SURFACES TO RECEIVE SEALANT.
4. SOME COPING SYSTEMS HAVE AN INNER MEMBRANE THAT DRAINS BEHIND METAL FLASHING. DO NOT BLOCK DRAINAGE OF THESE MEMBRANES WITH SEALANT.

Disclaimer: The design, specifications, and construction shall comply with all local building codes and standards. Parex USA installation guidelines are for general information and guidance only and Parex USA specifically disclaims any liability for the use of this design, and for design, engineering, or workmanship of any project. The assembly shall be designed to prevent condensation within the assembly. The designer and the user shall provide final drawings and specifications. Products shown other than those manufactured by Parex USA are shown for clarity of the Parex USA product only. Contact the manufacturer of such other products for installation instructions.

### KEY NOTES

- ① PANEL FRAMING BY OTHERS
- ② SUBSTRATE (GP-DENSGOLD™)
- ③ PAREX USA WATER-RESISTIVE AND AIR BARRIER COATING
- ④ PAREX USA ADHESIVE RUNNING VERTICAL
- ⑤ EXPANDED POLYSTYRENE INSULATION BOARD (EPS)
- ⑥ PAREX USA BASECOAT
- ⑦ PAREX USA REINFORCING MESH EMBEDDED IN PAREX USA BASE COAT WRAPPED ONTO FRAME
- ⑧ PAREX USA PRIMER (OPTIONAL)
- ⑨ PAREX USA FINISH
- ⑩ METAL THRU FLASHING
- ⑪ CONTINUOUS CONSTRUCTION ADHESIVE/SEALANT
- ⑫ BACKER ROD & SEALANT
- ⑬ WOOD BLOCKING (BY OTHERS)
- ⑭ WALL FRAMING (BY OTHERS)
- ⑮ ADJUSTABLE BRICK VENEER WALL TIES (BY OTHERS)
- ⑯ BRICK VENEER (BY OTHERS)

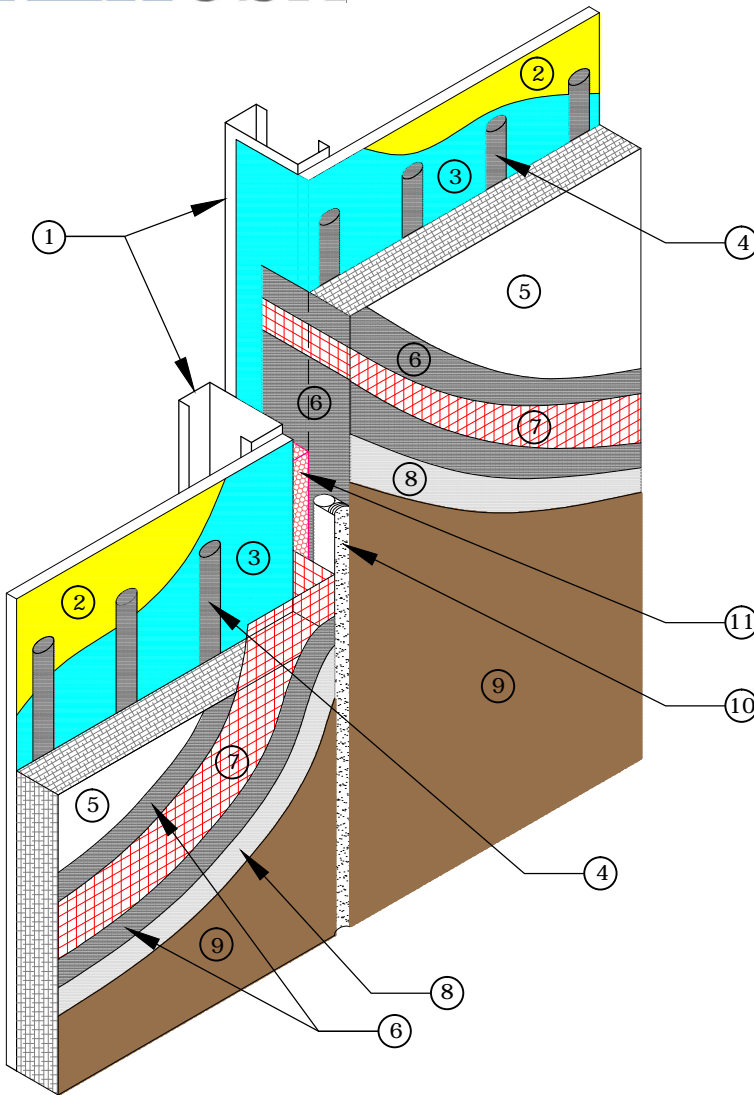


### SPS T1.02B TERMINATION AT CLADDING TRANSITION (ISO)

#### PAREX EIFS PANELIZED SYSTEM

- NOTES:
1. APPLY PAREX USA WATER-RESISTIVE AND AIR BARRIER COATING TO FRAMING AT PANEL ENDS TO PROVIDE CONTINUOUS BARRIER.
  2. WRAP BASE COAT AND REINFORCING MESH A MINIMUM OF 2 1/2 INCHES ONTO FRAMING AT PANEL EDGES.
  3. DO NOT APPLY FINISH COAT ONTO SURFACES TO RECEIVE SEALANT.
  4. SOME COPING SYSTEMS HAVE AN INNER MEMBRANE THAT DRAINS BEHIND THE METAL FLASHING. DO NOT BLOCK DRAINAGE OF THESE MEMBRANES WITH SEALANT.
  5. FRAMING SHOWN IS SCHEMATIC ONLY. PROJECT SPECIFIC FRAMING SHALL BE AS DESIGNED AND DETAILED BY THE STRUCTURAL ENGINEER.

Disclaimer: The design, specifications, and construction shall comply with all local building codes and standards. Parex USA installation guidelines are for general information and guidance only and Parex USA specifically disclaims any liability for the use of this design, and for design, engineering, or workmanship of any project. The assembly shall be designed to prevent condensation within the assembly. The designer and the user shall provide final drawings and specifications. Products shown other than those manufactured by Parex USA are shown for clarity of the Parex USA product only. Contact the manufacturer of such other products for installation instructions.



### KEY NOTES

- ① PANEL FRAMING BY OTHERS
- ② SUBSTRATE
- ③ PAREX USA WATER-RESISTIVE AND AIR BARRIER COATING
- ④ PAREX USA ADHESIVE RUNNING VERTICAL
- ⑤ EXPANDED POLYSTYRENE INSULATION BOARD (EPS)
- ⑥ PAREX USA BASECOAT
- ⑦ PAREX USA REINFORCING MESH EMBEDDED IN PAREX USA BASE COAT WRAPPED ONTO FRAMING
- ⑧ PAREX USA PRIMER (OPTIONAL)
- ⑨ PAREX USA FINISH
- ⑩ BACKER ROD & SEALANT (BY OTHERS)
- ⑪ INTERIOR AIR SEAL (BY OTHERS)
- ⑫ PLANNED PENETRATION (BY OTHERS)

### SPS E1.01 VERTICAL PANEL JOINT

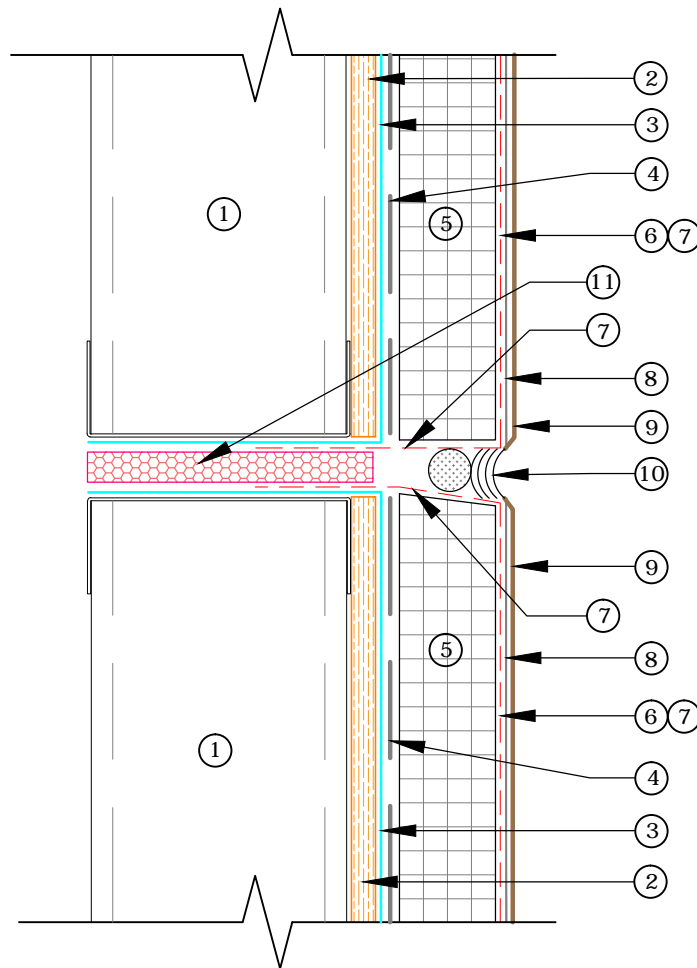
#### PAREX EIFS PANELIZED SYSTEM

#### NOTES:

1. APPLY PAREX USA WATER-RESISTIVE AND AIR BARRIER COATING TO FRAMING AT PANEL ENDS TO PROVIDE CONTINUOUS BARRIER.
2. WRAP BASE COAT AND REINFORCING MESH A MINIMUM OF 2 1/2 INCHES ONTO FRAMING AT PANEL EDGES.
3. DO NOT APPLY FINISH COAT ONTO SURFACES TO RECEIVE SEALANT.
4. SOME COPING SYSTEMS HAVE AN INNER MEMBRANE THAT DRAINS BEHIND THE METAL FLASHING. DO NOT BLOCK DRAINAGE OF THESE MEMBRANES WITH SEALANT.
5. FRAMING SHOWN IS SCHEMATIC ONLY. PROJECT SPECIFIC FRAMING SHALL BE AS DESIGNED AND DETAILED BY THE STRUCTURAL ENGINEER.

Disclaimer: The design, specifications, and construction shall comply with all local building codes and standards. Parex USA installation guidelines are for general information and guidance only and Parex USA specifically disclaims any liability for the use of this design, and for design, engineering, or workmanship of any project. The assembly shall be designed to prevent condensation within the assembly. The designer and the user shall provide final drawings and specifications. Products shown other than those manufactured by Parex USA are shown for clarity of the Parex USA product only. Contact the manufacturer of such other products for installation instructions.

## KEY NOTES



- ① PANEL FRAMING BY OTHERS
- ② SUBSTRATE
- ③ PAREX USA WATER-RESISTIVE AND AIR BARRIER COATING
- ④ PAREX USA ADHESIVE RUNNING VERTICAL
- ⑤ EXPANDED POLYSTYRENE INSULATION BOARD (EPS)
- ⑥ PAREX USA BASECOAT
- ⑦ PAREX USA REINFORCING MESH EMBEDDED IN PAREX USA BASE COAT WRAPPED ONTO FRAMING
- ⑧ PAREX USA PRIMER (OPTIONAL)
- ⑨ PAREX USA FINISH
- ⑩ BACKER ROD AND SEALANT (BY OTHERS)
- ⑪ INTERIOR AIR SEAL (BY OTHERS)

## SPS E1.02 HORIZONTAL PANEL JOINT

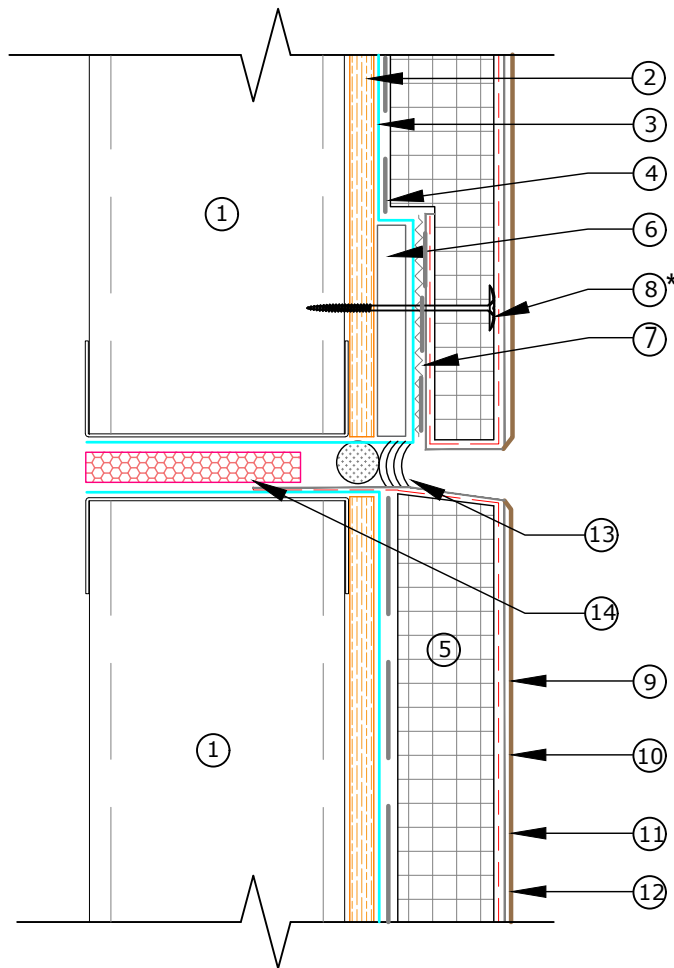
### PAREX EIFS PANELIZED SYSTEM

#### NOTES:

1. APPLY PAREX USA WATER-RESISTIVE AND AIR BARRIER COATING ONTO FRAMING AT PANEL EDGES FOR CONTINUOUS BARRIER.
2. WRAP BASE COAT AND REINFORCING MESH A MINIMUM OF 2 1/2 INCHES ONTO FRAMING AT PANEL EDGES.
3. DO NOT APPLY FINISH COAT ONTO SURFACES TO RECEIVE SEALANT.
4. SOME COPING SYSTEMS HAVE AN INNER MEMBRANE THAT DRAINS BEHIND METAL FLASHING. DO NOT BLOCK DRAINAGE OF THESE MEMBRANES WITH SEALANT.

Disclaimer: The design, specifications, and construction shall comply with all local building codes and standards. Parex USA installation guidelines are for general information and guidance only and Parex USA specifically disclaims any liability for the use of this design, and for design, engineering, or workmanship of any project. The assembly shall be designed to prevent condensation within the assembly. The designer and the user shall provide final drawings and specifications. Products shown other than those manufactured by Parex USA are shown for clarity of the Parex USA product only. Contact the manufacturer of such other products for installation instructions.

## KEY NOTES



- ① PANEL FRAMING BY OTHERS
- ② SUBSTRATE
- ③ PAREX USA WATER-RESISTIVE AND AIR BARRIER COATING
- ④ PAREX USA ADHESIVE RUNNING VERTICAL
- ⑤ EXPANDED POLYSTYRENE INSULATION BOARD (EPS)
- ⑥ CEMENT BOARD
- ⑦ PAREXUSA DRAINEDGE
- ⑧ \*OPTIONAL MECHANICAL FASTENER
- ⑨ PAREX USA BASECOAT
- ⑩ PAREX USA REINFORCING MESH EMBEDDED IN PAREX USA BASE COAT WRAPPED ONTO FRAMING
- ⑪ PAREX USA PRIMER (OPTIONAL)
- ⑫ PAREX USA FINISH
- ⑬ BACKER ROD AND SEALANT (BY OTHERS) SEALANT BONDED TO CEMENT BOARD EDGE ONLY
- ⑭ INTERIOR AIR SEAL (BY OTHERS)

## SPS D 1.01 PANEL TO PANEL DRAINAGE JOINT

### PAREX EIFS PANELIZED SYSTEM

#### NOTES:

1. APPLY PAREX USA WATER-RESISTIVE AND AIR BARRIER COATING ONTO FRAMING AT PANEL EDGES FOR CONTINUOUS BARRIER.
2. WRAP BASE COAT AND REINFORCING MESH A MINIMUM OF 2 1/2 INCHES ONTO FRAMING AT PANEL EDGES.
3. DO NOT APPLY FINISH COAT ONTO SURFACES TO RECEIVE SEALANT.
4. SOME COPING SYSTEMS HAVE AN INNER MEMBRANE THAT DRAINS BEHIND METAL FLASHING. DO NOT BLOCK DRAINAGE OF THESE MEMBRANES WITH SEALANT.

Disclaimer: The design, specifications, and construction shall comply with all local building codes and standards. Parex USA installation guidelines are for general information and guidance only and Parex USA specifically disclaims any liability for the use of this design, and for design, engineering, or workmanship of any project. The assembly shall be designed to prevent condensation within the assembly. The designer and the user shall provide final drawings and specifications. Products shown other than those manufactured by Parex USA are shown for clarity of the Parex USA product only. Contact the manufacturer of such other products for installation instructions.